

Composition and distribution of subtidal and intertidal crustacean assemblages in soft-bottoms of the Ria de Vigo (NW Spain)

EVA CACABELOS, ANTÍA LOURIDO and JESÚS S. TRONCOSO

Dpto. Ecoloxía e Bioloxía Animal, Facultade de Ciencias do Mar, Universidade de Vigo, Campus Lagoas-Marcosende, 36310, Vigo (Pontevedra), Spain. E-mail: cacabelos@uvigo.es

SUMMARY: The intertidal and subtidal soft-bottoms of the inner area of the Ria de Vigo (NW Spain) were sampled in November and December 1999, and spatial distribution of crustacean species was examined. Environmental variables from water and sediment were measured at each sampling site. Amphipods and mycópodos were the numerically dominant orders (49.9 and 26.9% dominance), amphipods accounting for more than 54% of identified taxa. The highest crustacean densities occurred with 55-41 species and 5953.6-4346.4 ind. m⁻² in external areas, where the diversity index reached the maximum values. Multivariate techniques revealed that distribution of crustaceans in the inlet was highly dependent on depth. Ordination analysis determined three major assemblages: Intertidal bottoms colonized by seagrasses and subjected to strong variations of salinity were dominated by the amphipod *Melita palmata*, harpacticoids and the isopod *Idotea baltica* (Group A). The amphipod *Corophium* cf. *runcicorne* and the cumacean *Iphinoe tenella* predominated in the muddy bottoms of central areas (Group B). These species were also present in the deep muddy bottoms of the mouth of the inlet, with high carbonate and gravel contents, and with the mycópodos and the amphipod *Microdeutopus* cf. *armatus* displaying maximum dominances (Group C).

Keywords: marine crustaceans, macrofaunal composition, soft bottoms, Ensenada de San Simón, Ria de Vigo, Atlantic Ocean.

RESUMEN: COMPOSICIÓN Y DISTRIBUCIÓN DE LAS ASOCIACIONES DE CRUSTÁCEOS SUBMAREALES E INTERMAREALES EN FONDOS BLANDOS DE LA RÍA DE VIGO (NO ESPAÑA). – Los fondos blandos intermareales y submareales de la parte interna de la Ría de Vigo (NO España) fueron estudiados en relación a la distribución de los crustáceos y a las variables ambientales asociadas a sus aguas y sedimentos. Los anfípodos y miocópodos fueron los órdenes más abundantes (49.9 y 26.9%), presentando los anfípodos más del 54% de los taxa identificados. Las mayores densidades de crustáceos aparecieron en las áreas externas, con 55-41 especies y 5953.6-4346.4 individuos por m², alcanzándose aquí los máximos valores de diversidad. Se emplearon técnicas multivariantes para analizar los datos, demostrando que la distribución de los crustáceos en la ensenada dependía principalmente de la profundidad. Se observaron tres principales asociaciones de crustáceos: Los fondos intermareales, colonizados por las fanerógamas marinas *Zostera marina* y *Z. noltii* y sometidos a drásticos cambios de salinidad, estuvieron dominados por el anfípodo *Melita palmata*, los harpacticóides y el isópodo *Idotea baltica* (Grupo A). El anfípodo *Corophium* cf. *runcicorne* y el cumáceo *Iphinoe tenella* predominaron en los fondos fangosos de la zona central (Grupo B). Estas especies también estuvieron presentes en los fondos profundos de la boca de la ensenada, donde los miocópodos y el anfípodo *Microdeutopus* cf. *armatus* presentaron sus máximas dominancias (Grupo C).

Palabras clave: crustáceos marinos, composición macrofaunística, fondos blandos, Ensenada de San Simón, Ría de Vigo, Océano Atlántico.

INTRODUCTION

The study of the composition and distribution of benthic communities is of great interest, because they

are considered as good indicators of the conditions of marine sediments (Grall and Glémarec, 1997; Conrad and López-González, 2001). Crustaceans are an important component of soft-bottom benthic commu-

nities in temperate latitudes. Amphipods in particular play an important role in structuring benthic assemblages (Duffy and Hay, 2000) as secondary and tertiary producers in marine communities (Guerra *et al.*, 2002). Dauvin (1988) and Beare and Moore (1996) showed amphipods to be an important source of food for benthic fauna of commercial interest. Amphipods are also very ecologically sensitive organisms and good indicators of natural or disturbed environmental conditions (Conradi *et al.*, 1997). Moreover, benthic databases are essential for comparisons which can be used in impact studies or monitoring programmes, in order to preserve the environments and the species of commercial importance that they support (Desroy *et al.*, 2002).

The highly macrobenthic diversity characteristic of the Galician rias (NW Spain) is due to their great variety of habitats and sediments (Troncoso and Urgorri, 1993; Moreira *et al.*, 2009). They are characterized by a regular incoming of nutrients due to upwelling (Nombela *et al.*, 1995), which is translated into a high primary productivity. However, the ria seashores are also highly populated and therefore subject to many anthropogenic perturbations (e.g. culture of bivalves and construction of harbours). This is translated into organic enrichments and changes in sedimentary composition (López-Jamar and Mejuto, 1985; Moreira *et al.*, 2009).

The Ria de Vigo is one of the largest and most complex estuarine systems on the Galician coasts, and the first in terms of economic importance and human population. During the last forty years it has been extensively studied, especially with regard to its oceanography, fisheries, mussel culture on rafts and shellfish resources (Abella *et al.*, 1996; Pérez-Arlucea *et al.*, 2000). Previous studies on the benthic fauna of the Ria de Vigo only referred to specific areas and/or faunistic groups (López-Jamar and Cal, 1990; Moreira *et al.*, 2004, 2009; Cacabelos *et al.*, 2008a, b). Except for the studies of Cacabelos *et al.* (2008c) about the macrofaunal assemblages found in the Ensenada de San Simón as a whole, in which some of the most relevant arthropods are mentioned, the crustacean fauna of the inlet has not been properly studied.

Since grain size is one of the most often reported factors affecting the distribution of crustaceans elsewhere, we hypothesized that in this particular inlet this factor could influence the pattern of crustacean zonation. Therefore, the objectives of the present study are (i) to describe the structure of the crustacean communities in intertidal and shallow subtidal areas of the Ensenada de San Simón, (ii) to analyse the interactions between the different assemblages and (iii) to relate any observed faunal pattern to sediment characteristics and other environmental variables. This knowledge will be essential to ensure the correct management of resources in the area, especially since it has been included in the Nature 2000 Network as a Special Conservation Zone.

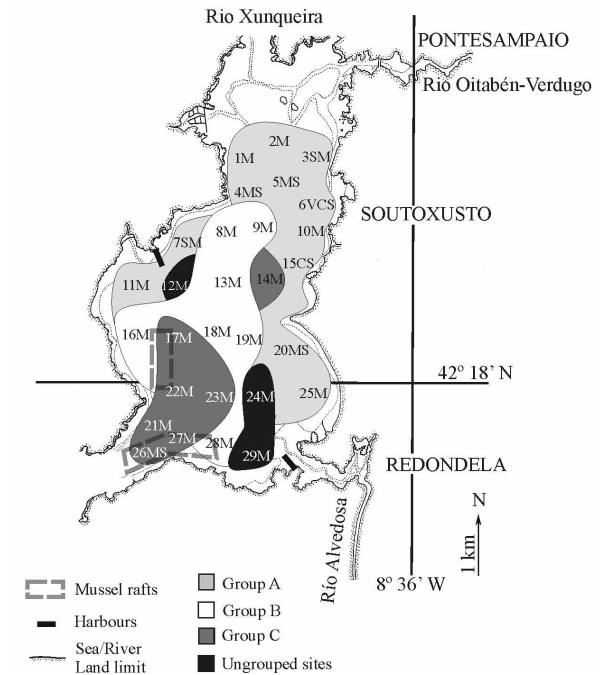
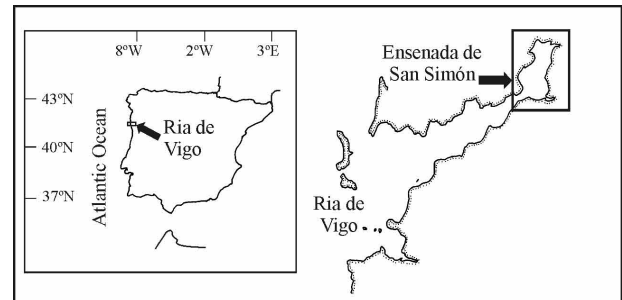


FIG. 1. – Location of the Ensenada de San Simón (Ria de Vigo) with position of the 29 sampling sites and spatial distribution of crustacean assemblages related to sediment grain size (M, mud, SM, sandy mud, MS, muddy sand, CS, coarse sand, VCS, very coarse sand).

METHODS

Study area

The Ensenada de San Simón is located in the innermost part of the Ria de Vigo, between 42°17' and 42°21'N and between 8°37' and 8°39'W (Fig. 1). Soft-bottoms of this inlet are mainly muddy with high organic matter content (0.69-10%) (Vilas *et al.*, 1995). Intertidal and shallow subtidal areas have meadows of the seagrasses *Zostera noltii* Hornem. 1832 and *Zostera marina* L. The culture of mussels on rafts is a common practice in large areas of the mouth of the inlet, where 75 rafts are exploited. Two small harbours are located in the inlet sides. The major hydrological features of the inlet are the large freshwater inputs occurring in the innermost part of the inlet, resulting in drastic temperature and salinity fluctuations on a tidal and seasonal basis (6-35.3 psu; Saiz *et al.*, 1961; Nombela and Vilas, 1991). Previous

studies (Cacabelos *et al.*, 2008a, b, c) have included detailed information about this study area.

Sampling and sedimentary analysis

Quantitative samples were collected from 29 sites using a van Veen grab in November and December 1999 (Fig. 1). Five replicate samples were taken at each site (0.056 m²). Samples were sieved through 0.5 mm mesh and the retained material was fixed in 10% buffered formalin. Fauna was sorted from the sediment and preserved in 70% ethanol for identification. Temperature and pH were measured in situ from water and sediment. An additional sedimentary sample was taken at each site for later grain-size analysis and to determine calcium carbonate and total organic matter contents. Sedimentary types were determined according to Junoy (1996). Median grain size (Q₅₀) and sorting coefficient (S_o) were also determined for each sample. Kurtosis (Kg) and skewness (Sk) coefficients were calculated according to Folk and Ward (1957). Calcium carbonate content (%) was estimated by sample treatment with hydrochloric acid, and total organic matter content (%) was estimated from the weight loss after placing samples in a furnace for 4 hours at 450°C.

Data analysis

Abundance data of each crustacean species were organized in matrices, and the five samples taken at each site were pooled (0.28 m²). Total abundance of crustaceans (N), number of species (S), Shannon-Wiener diversity index (H', log₂) and Pielou's evenness index (J) were determined for each site. Correlations between these diversity measures, the abundance of dominant species and environmental variables were determined using Spearman's non-parametric correlation coefficient. Crustacean assemblages were determined

through non-parametric multivariate techniques using the Plymouth Routines of the Multivariate Ecological Research software package (PRIMER; Clarke and Warwick, 1994). A similarity matrix was performed using the Bray-Curtis coefficient after applying the fourth-root transformation to species abundance. Classification and ordination of sites and species were performed by cluster analysis through the algorithm UPGMA and non-metrical multidimensional scaling (MDS), respectively.

With regard to the abundance of the species recorded in the Ensenada de San Simón, five categories of constancy index were considered according to the number of times the species was found in the total of samples: constant (>76%), very common (51-75%), common (26-50%), uncommon (13-25%) and rare (<12%). According to the ratio between this index and the total constancy in the considered area, the fidelity index classify the species as accidental (<10%), occasional (11-33%), accessory (34-50%), preferential (51-66%), elective (67-90%) and exclusive (>91%) (Cabioc, 1968; Dajoz, 1971).

Relationships between abundance of crustaceans and environmental variables were studied by means of the BIOENV procedure (PRIMER package) and canonical correspondence analysis (CANOCO package; ter Braak and Prentice, 1988). Environmental variables expressed in percentages were previously transformed by log (x+1) and all of them were normalized.

RESULTS

The soft bottoms of the Ensenada de San Simón were characterized by a predominance of muddy sediments with a high organic matter and low calcium carbonate contents. Sandy sediments were present in tidal channels in the inner inlet where low total organic matter content was found. The shallow sediments became increasingly muddy towards the deeper bottoms

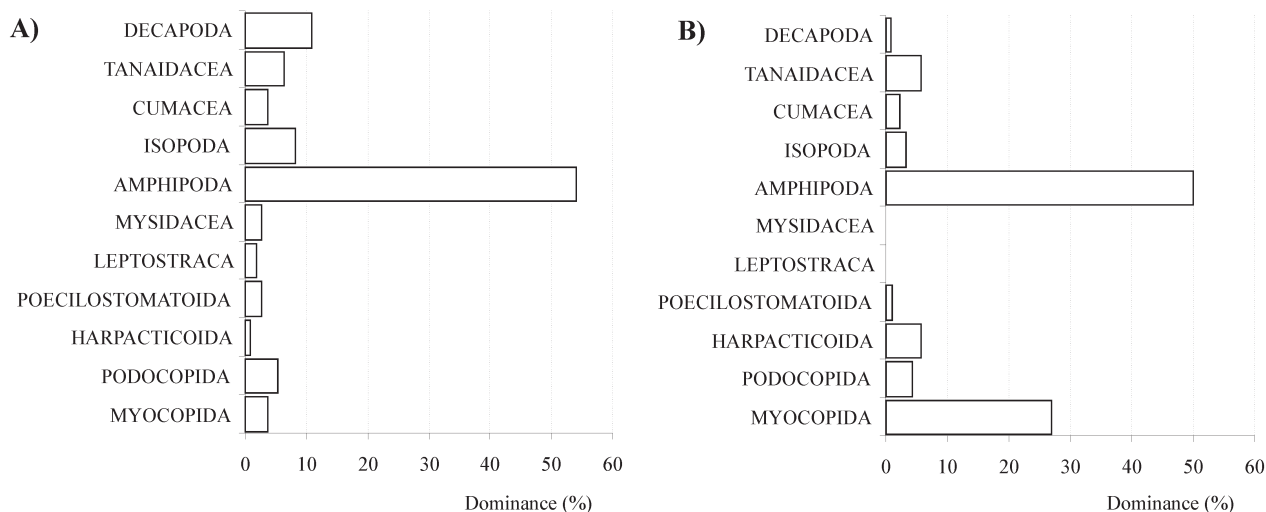


FIG. 2. – Dominances (%) of different orders calculated in function of number of taxa (A) and individuals (B).

TABLE 1. – Significant Spearman’s rank correlation coefficients between biotic and environmental parameters. T^b, bottom water temperature, S_o, sort coefficient, CO₃, carbonate content, S, number of species, N, total abundance and H’(log₂), Shannon Wiener diversity index. (N=29, * p<0.05, ** p<0.01).

	S	N	H’(log ₂)
T ^b	0.399*	0.277	0.121
S _o	0.402*	0.259	0.016
Depth	0.556**	0.3	0.554**
CO ₃	0.29	0.446*	0.115

in the centre and at the mouth of the inlet. The areas around the outer part had muddy sands with a large gravel fraction composed by mussel shells.

Sampling yielded 10916 crustaceans belonging to 11 orders and 111 species or taxa, of which 60 were amphipods, 11 decapods, 9 isopods, 7 tanaidaceans, 6 podocopids, 4 mycopicids and 4 cumaceans, 3 pocilostomatoids and 3 mysidaceans, 2 leptostraceans and 2 harpacticoids (Supplementary material Appendix 1 and 2; Fig. 2A).

The Amphipoda fauna was the dominant order in the inlet (Fig. 2B). The numerically most important species of this group were *Microdeutopus cf. armatus* (11.43% of total fauna), *Melita palmata* (7.30%), *Metaphoxus simplex* (2.91%), *Harpinia dellavallei* (2.80%) and *H. crenulata* (2.78%). The Order Mycopida accounted for 26.88% of all specimens. The rest of the orders were less dominant in terms of abundance.

The highest numbers of species and densities were recorded at sampling sites 27, 22 and 26, with 55-41 species and 5953.6-4346.4 ind. m⁻². The lowest densities and number of species were recorded at sites 12, 29 and 24, with 0-35.7 ind. m⁻² and 0-7 species. The Shannon-Wiener diversity index ranged between 4.20 (site 26) and 0.00 (sites 12 and 29). Evenness showed low values on bottoms with high dominances of mycopicids and the amphipods *Harpinia* spp. (site 17) or

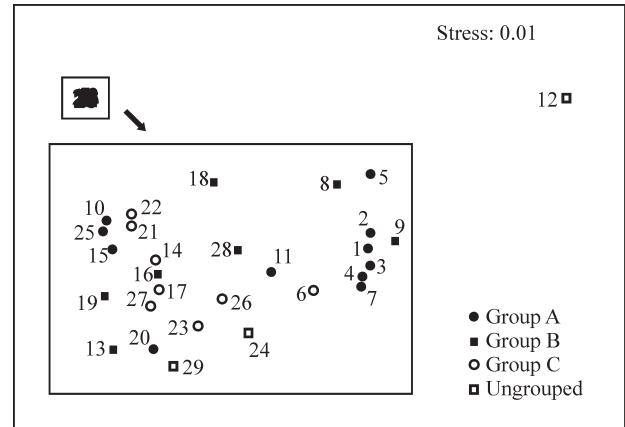


FIG. 4. – Non-metric multidimensional scaling ordination of crustacean assemblages.

the harpacticoids (site 10).

Spearman’s correlation coefficient showed that depth was positively correlated with number of species and Shannon-Wiener diversity index (p<0.01). Temperature of bottom water and sorting coefficient showed positive correlations with number of species (p<0.05), while carbonate content was positively correlated (p<0.05) with abundance of individuals (Table 1).

Crustacean assemblages and species affinities

The dendrogram obtained through cluster analysis based on abundance data showed the presence of three major groups (Fig. 3; assemblages illustrated in Fig. 1): Group A, composed of intertidal sites; Group B, located in the shallow muddy bottoms of the centre of the inlet and Group C, composed of the deeper muddy bottoms of the mouth of the inlet. These same groups appeared in the MDS ordination (Fig. 4), in which site 12 was eliminated due to its absence of individuals. The abiotic and faunistic characteristics of these assemblages

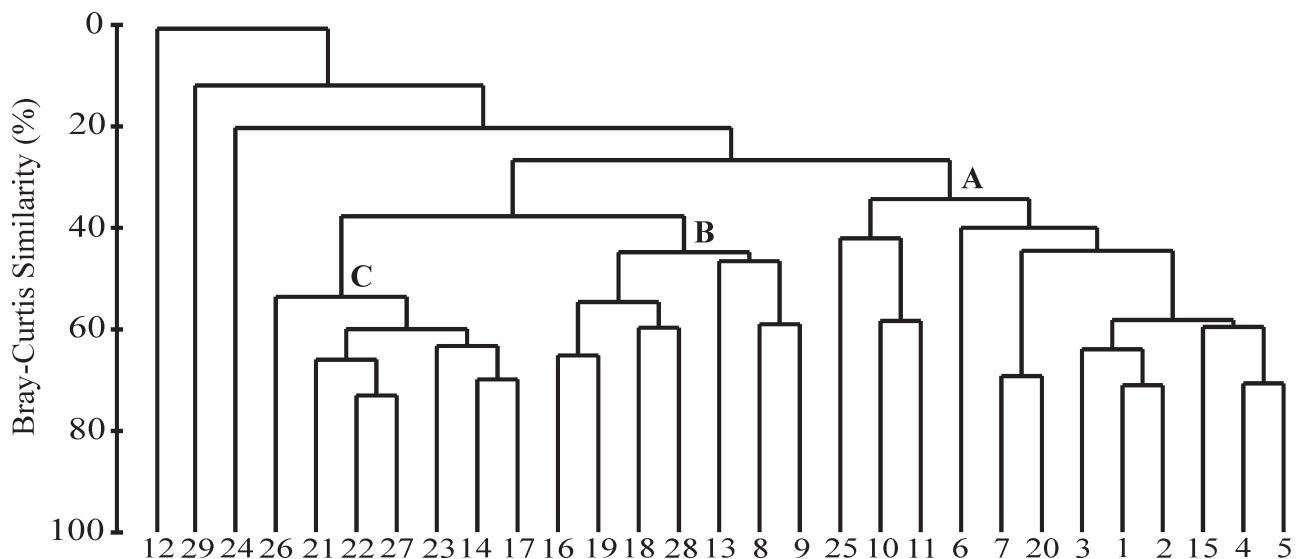


FIG. 3. – Dendrogram using Bray-Curtis similarity coefficient showing the classification of sites.

TABLE 2. – Ecological features of the crustacean assemblages determined in the Ensenada de San Simón, indicating ranges and average \pm standard deviation of biotic (values per 0.28 m²) and physical characteristics. S, number of species; N, number of individuals; J', Pielou's evenness; H', Shannon Wiener diversity index; Q₅₀, median grain size; Bt, bottom type (M, mud; CS, coarse sand; SM, sandy mud, MS, muddy sand); OM, organic matter content; CO₃, carbonate content. Species that add up to 75% of the total abundance in each assemblage are listed in order of dominance (%), and constancy (Ct, constant; VC, very common; C, common) and fidelity (Ex, exclusive; El, elective; Pr, preferential; Ac, accessory; Oc, occasional) are indicated.

		Group A	Group B	Group C
Sites		1, 2, 3, 4, 5, 6, 7, 10, 11, 15, 20, 25	8, 9, 13, 16, 18, 19, 28	14, 17, 21, 22, 23, 26, 27
S	Mean \pm SD	14.83 \pm 5.20	16.57 \pm 6.35	38.00 \pm 9.1
	Range	25-7	25-7	55-29
N	Mean \pm SD	214.58 \pm 130.69	95.57 \pm 71.39	1094.43 \pm 458.1
	Range	405-28	242-28	1667-326
J'	Mean \pm SD	0.68 \pm 0.10	0.77 \pm 0.12	0.64 \pm 0.1
	Range	0.92-0.56	0.93-0.63	0.78-0.47
H' (log ₂)	Mean \pm SD	2.71 \pm 0.55	3.08 \pm 0.70	3.40 \pm 0.7
	Range	3.53-1.65	4.12-2.26	4.20-2.32
Depth (m)	Mean \pm SD	2.14 \pm 0.77	3.96 \pm 0.75	11.76 \pm 8.8
	Range	3.6-Intertidal	4.7-2.9	28.2-3.7
Q ₅₀ (mm)	Mean \pm SD	0.33 \pm 0.46	0.01 \pm 0.01	0.22 \pm 0.6
	Range	1.25-0.01	0.04-0.01	1.5-0.01
Gravel (%)	Mean \pm SD	7.81 \pm 10.15	1.40 \pm 1.07	9.16 \pm 14.1
	Range	29.96-0	3.01-0.00	40.17-0.59
Sand (%)	Mean \pm SD	50.92 \pm 30.97	22.14 \pm 7.60	31.56 \pm 8.6
	Range	94.39-2.33	35.89-13.94	48.34-24.37
Silt/Clay (%)	Mean \pm SD	41.28 \pm 36.94	76.46 \pm 7.63	59.28 \pm 21.6
	Range	97.67-2.05	86.06-63.48	73.60-11.49
OM (%)	Mean \pm SD	14.23 \pm 12.99	18.86 \pm 4.44	15.88 \pm 5.6
	Range	36.93-0.95	23.00-10.88	22.17-7.22
CO ₃ (%)	Mean \pm SD	6.39 \pm 2.08	4.38 \pm 1.02	10.40 \pm 13.4
	Range	11.98-4.28	5.8-2.36	40.46-2.28
Bt	Range	M-VCS	M	M-MS
Dominant taxa		<i>Melita palmata</i> (30.37/Pr/VC)	<i>Corophium</i> cf. <i>runcicorne</i> (18.24/Ac/VC)	<i>Myocopida</i> sp. 4 (34.19/Pr/Ct)
		Harpacticoida spp. (15.53/Oc/Ct)	<i>Iphinoe tenella</i> (9.72/Ac/Ct)	<i>Microdeutopus</i> cf. <i>armatus</i> (15.65/Ac/Ct)
		<i>Idotea baltica</i> (9.32/Ex/VC)	Harpacticoida spp. (9.27/Oc/Ct)	<i>Metaphoxus simplex</i> (4.15/Ex/VC)
		<i>Microdeutopus gryllotalpa</i> (7.38/Ex/VC)	<i>Propontocypris</i> sp. (7.03/Oc/VC)	<i>Harpinia crenulata</i> (3.97/Ex/Ct)
		<i>Propontocypris</i> sp. (6.49/Oc/VC)	Poecilostomatoida sp. 1 (6.28/Ac/Ct)	<i>Harpinia dellavallei</i> (3.93/El/VC)
		<i>Zeuxo normani</i> (4.19/Oc/VC)	<i>Lembos</i> sp. (6.28/Ac/VC)	<i>Tanaopsis graciloides</i> (3.43/Ex/Ct)
		Cytheracea sp. (3.81/Pr/VC)	<i>Corophium</i> spp. (4.93/Ac/Ct)	<i>Myocopida</i> sp. 1 (3.41/El/Ct)
			<i>Zeuxo normani</i> (4.33/Ac/Ct)	<i>Harpinia antennaria</i> (3.41/El/VC)
			<i>Leucothoe incisa</i> (4.19/Oc/C)	<i>Ampelisca tenuicornis</i> (2.99/Pr/Ct)
			<i>Ampelisca tenuicornis</i> (3.89/Ac/VC)	
			<i>Myocopida</i> sp. 4 (3.59/Ac/VC)	

are summarized in Table 2. Dominant species and their constancy and fidelity indices are also shown in this table. Cluster analysis based on abundance data of the species with dominances higher than 1% (inverse analysis) showed 4 main groups (Fig. 5).

Group A was located in the innermost part of the inlet (Fig. 1), in intertidal sediments subject to strong variations of salinity close to the mouth of the rivers Oitabén-Verdugo and Xunqueira. Sites showed high granulometric differences, with sedimentary types ranging from mud to very coarse sand. These bottoms were poor in total number of species and Shannon-Wiener diversity index (Table 2). The seagrasses *Zostera marina* and *Z. noltii* were spread across most of these intertidal and shallow bottoms, with depths from 3.6 m to intertidal levels. Species with the highest abundance were, cited in decreasing order, the amphipod

Melita palmata, the harpacticoids, the isopod *Idotea baltica*, the amphipod *Microdeutopus gryllotalpa*, the podocopid *Propontocypris* sp., the tanaidacean *Zeuxo normani* and the podocopid *Cytheracea* sp. The harpacticoids, the amphipods *M. palmata*, *M. gryllotalpa* and *Corophium* spp., the podocopid *Propontocypris* sp. and the isopod *I. baltica* were the species with the greatest similarity contribution for the group. A total of 22 species were exclusive to this assemblage, while only the harpacticoids were constant. This assemblage was linked to Group 1 of inverse analysis (Fig. 5), since it included *M. palmata*, *I. baltica* and *M. gryllotalpa*.

Group B was present in the shallow muddy bottoms of the centre of the inlet. Sediments were mainly composed of silt and clay with a high organic matter content. The average individual density was the lowest of the inlet, and the sites showed the greatest mean evenness

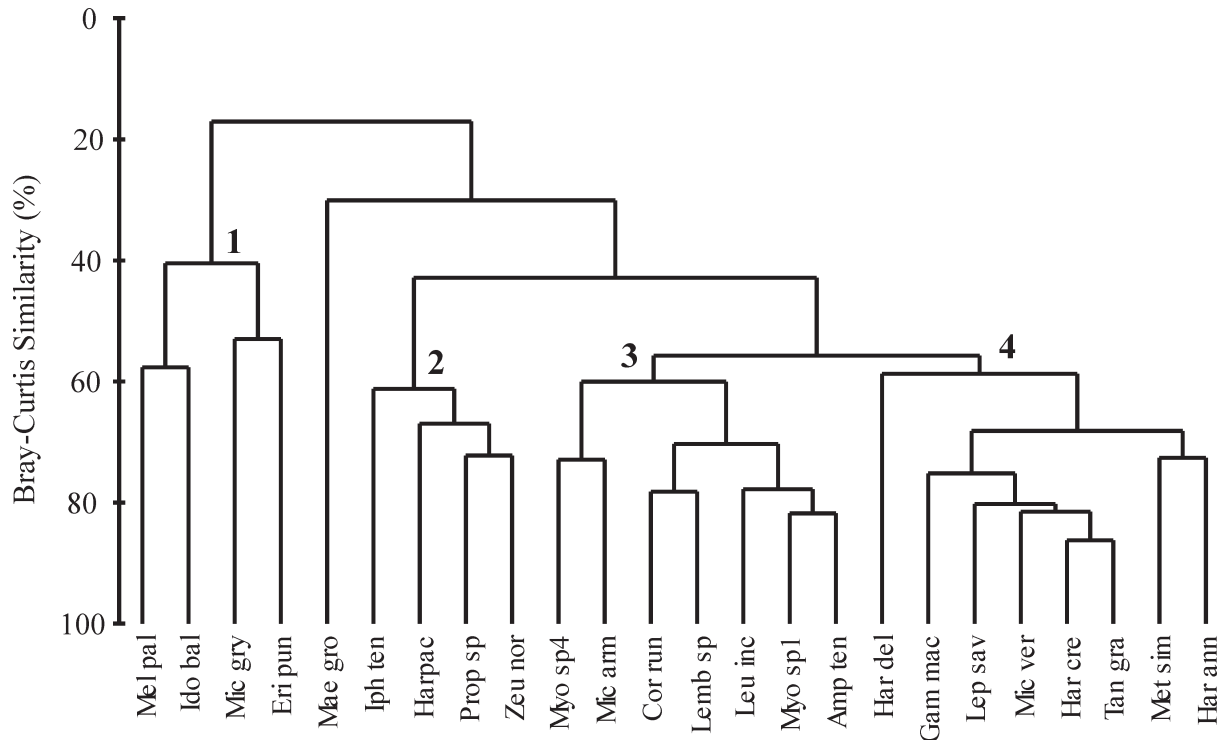


FIG. 5. – Dendrogram using Bray-Curtis similarity coefficient showing the classification of species with a numerical dominance $\geq 1\%$. Species codes: Myo sp4, Myocopida sp. 4; Mic arm, *Microdeutopus cf. armatus*; Mel pal, *Melita palmata*; Harpac, Harpacticoida spp.; Met sim, *Metaphoxus simplex*; Har del, *Harpinia dellavallei*; Har cre, *Harpinia crenulata*; Myo sp1, Myocopida sp. 1; Har ann, *Harpinia antennaria*; Tan gra, *Tanaopsis graciloides*; Amp ten, *Ampelisca tenuicornis*; Prop sp, *Propontocypris* sp.; Ido bal, *Idotea baltica*; Mic gry, *Microdeutopus gryllotalpa*; Zeu nor, *Zeuxo normani*; Iph ten, *Iphinoe tenella*; Cor run, *Corophium cf. runcicorne*; Lep sav, *Leptochelia savignyi*; Mic ver, *Microdeutopus versiculatus*; Eri pun, *Erichthonius punctatus*; Leu inc, *Leucothoe incisa*; Lemb sp, *Lembos* sp.; Mae gro, *Maera grossimana*; Gam mac, *Gammaropsis maculata*.

index (Table 2). The amphipod *Corophium cf. runcicorne*, the cumacean *Iphinoe tenella*, harpacticoids, *Propontocypris* sp., Poecilostomatoida sp. 1, the amphipods *Lembos* sp. *Leucothoe incisa*, *Ampelisca tenuicornis* and *Corophium* spp., *Zeuxo normani*, and Myocopida sp. 4 were the most dominant taxa. *Corophium* spp., harpacticoids, poecilostomatoids, *I. tenella*, *Z. normani*, *Propontocypris* sp. and *C. cf. runcicorne* defined this group. The harpacticoid *Porcellidium* sp., the mysid *Paramysis* sp., *Microdeutopus* sp., the isopod Arcturidae sp. and the decapod Callinassidae sp. were exclusive to the assemblage, and the amphipods *Ampelisca brevicornis* and *Colomastix pusilla* were elective. Among dominant species, harpacticoids, *Corophium* spp., Poecilostomatoida sp. 1, *I. tenella* and *Z. normani* were constant. Groups 2 of inverse analysis, composed of *I. tenella*, harpacticoids, *Propontocypris* sp. and *Z. normani* were connected with this assemblage.

Group C was situated in the mouth of the inlet, reaching up to 28.2 m depth. Sediments were predominantly composed of silt and clay, but showed the highest carbonate and gravel contents. The number of species, the density of individuals and the Shannon-Wiener diversity index were the highest found in the inlet (Table 2). Species with the highest abundance in these bottoms were myocopids sp. 4 and sp. 1, the amphipods *M. cf. armatus*, *M. simplex*, *H. crenulata*, *H. dellavallei*, *H. antennaria* and *A. tenuicornis* and the tanaid *Tanaopsis*

graciloides. A total of 38 species were exclusive to this assemblage, and 17 were constant. Among the dominant species, *H. crenulata*, *Microdeutopus versiculatus*, Myocopida sp.1, *L. incisa*, *H. dellavallei* and the tanaids *T. graciloides* and *Leptochelia savignyi* were exclusive to this group. Groups 3 and 4 of figure 5 were linked to this assemblage.

Relationships between crustacean fauna and environmental variables

According to the BIOENV analysis, the crustacean assemblages correlated best with bottom temperature-depth-kurtosis coefficient and bottom temperature-depth-sediment temperature-kurtosis coefficient combinations (Spearman's rank correlation ρ_w : 0.250 and 0.243 respectively). Temperature of bottom water and depth were the variables with the best values when each variable was considered alone (ρ_w : 0.221 and 0.215 respectively).

Canonical correspondence analysis showed that the first two axes accounted for 37.24% of the total variance of species-environment relation, and 30.7% of the species variance (Fig. 6). Forward selection in this analysis selected bottom temperature, depth, coarse silt, fine sand and very fine sand as the variables explaining most of the variance in the species data ($p < 0.01$). The graphic representation showed an ordination of sites

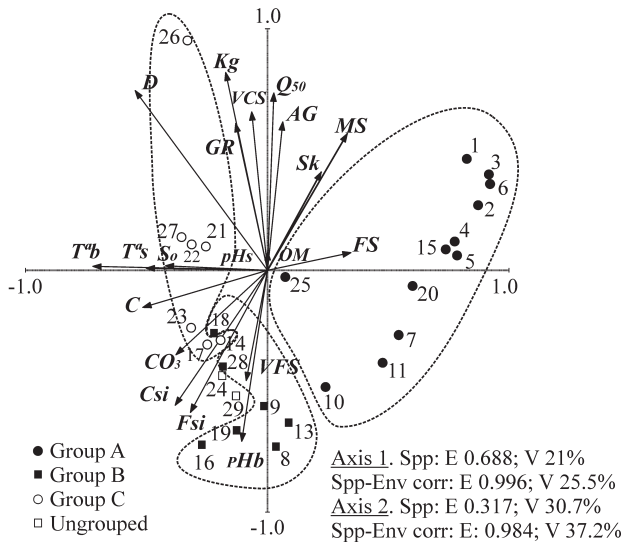


FIG. 6. – Canonical correspondence analysis ordination of environmental variables and sampled sites relative to the axes I and II for the Ensenada de San Simón. Eigenvalues (E) and variance (V) for species data and species-environment correlations are indicated. Ts, sediment temperature, Tb, temperature of bottom water, So, sorting coefficient, Kg, kurtosis, Sk, skewness, GR, gravel, VCS, very coarse sand, CS, coarse sand, MS, medium sand, FS, fine sand, VFS, Vvery fine sand, Csi, coarse silt, FSi, fine silt, C, clay, CO₃, carbonate content, OM, organic matter content, Q₅₀, median grain size.

following a gradient in depth, bottom temperature and grain size (Fig. 6). Sampling sites from group A were distributed along positive quadrants of axis I, in shallow bottoms following an increase in content of coarse silt and very fine sand. Groups B and C followed an increase in depth appearing distributed along the negative part of axes I.

According to the results obtained through these analyses (BIOENV, CCA), the distribution of the crustacean fauna in the Ensenada de San Simón was mainly related to depth, temperature of bottom water and sediment grain size.

DISCUSSION

Results showed that distribution of the crustacean fauna in the Ensenada de San Simón was primarily linked to temperature of bottom water and depth. Quantitative sampling showed that the number of species observed in the Ensenada de San Simón (111 taxa) was similar to that found in other Galician rias. Garmendia *et al.* (1998) found 66 amphipod species in the Ria de Ares-Betanzos, while Lourido *et al.*, 2008, found 125 peracarid species in the Ria de Aldán. Our number of species was high in comparison with those reported from other European estuaries (e.g. 20 crustacean species were found in the Ria de Huelva (Cano and García, 1987), 51 in the Arcachon Bay (Bachelet *et al.*, 1996), 23 in the Rance Basin (Desroy and Retière, 2001), 14 in the Bidasoa Estuary (Garmendia *et al.*, 2003) and 50 malacostracean species in the Santander Bay (Lastra *et al.*, 1990)). However, as can be observed in Table

3, some authors sieved organisms with 1 mm mesh, which could involve the loss of small organisms (e.g. Podocopida or Harpacticoida).

Both crustacean diversity and number of species were greater on subtidal bottoms and impoverished towards the brackish intertidal areas, as was also reported from other estuarine suprabenthic communities (Mees *et al.*, 1995; Cunha *et al.*, 1999). Aquatic fauna are submitted to stressful conditions in intertidal zones (e.g. desiccation, fluctuations in salinity; Kikuchi, 1987), derived from changes in freshwater inputs. Intertidal and subtidal soft bottoms of the Ensenada de San Simón were sampled in autumn 1999, the rainy season in these temperate latitudes. In the inlet, changes in salinity are drastic during the year (Saiz *et al.*, 1961; Vilas *et al.*, 1995). Similar areas with more stable salinities and temperatures during the year showed higher biodiversities (e.g. Lourido *et al.*, 2008). Euryhaline species such as *Melita palmata* or *Corophium acherusicum* benefit from salinity fluctuations. However, our study referred specifically to the autumn, and the conclusions should be interpreted carefully. Different structures of the crustacean community were found during the year. For most species from temperate latitudes the larval settlement takes place during the summer period (Pfister, 1997; Pallas *et al.*, 2006) or during two annual recruitment cycles (Upchurch and Wenner, 2008), especially in the nursery habitats of seagrass meadows (Heck *et al.*, 2003). The existence of these vegetated bottoms could be relevant in the temporal evolution of the crustacean community. To present a complete study of the assemblage structure, an analysis of the seasonal pattern should be the next step (as in García Muñoz *et al.*, 2008), integrating the life cycle of the fauna and looking for the strongest factors influencing its distribution. Distribution of the crustacean fauna in the inlet was linked to temperature of bottom water and depth, which directly influence the hydrodynamic conditions. The importance of the temperature should be interpreted carefully, since Ysebaert and Herman (2002) pointed out that long-term averages of environmental variables are more important than values obtained during samplings. The gradual increase in water depth is accompanied by other environmental gradients such as stability of the substrate, which are usually determinant for the macrofauna distribution (Corbera and Cardell, 1995; Cunha *et al.*, 1999). Accordingly with our results, the grain size is one of the most often reported factors in determining the distribution and composition of crustaceans (Robertson *et al.*, 1989). Higher sediment diversity increases the benthic faunas due to a higher diversity of microhabitats (e.g. Simboura *et al.*, 2000; Lourido *et al.*, 2008). The Ensenada de San Simón has a predominance of muddy bottoms, thus limiting the crustacean biodiversity along the inlet.

Intertidal sediments colonized by *Zostera noltii* and *Z. marina* in San Simón showed low crustacean species numbers. Usually, seagrass meadows provide a complex habitat that can be colonized by many spe-

TABLE 3. – Species of crustacean determined in different areas of the Atlantic Iberian Peninsula. Amp, Amphipoda, Iso, Isopoda, Mys, Mysidacea, Cum, Cumacea, Tan, Tanaidacea, Dec, Decapoda, Others include Podocopida, Mycopolida, Poecilostomatoida, Leptostraca and Harpacticoida. Dredge and sampling area are detailed, and ranges of sediment characteristic are provided: median grain size (Q_{50} , mm) and organic matter content (OM, %). * Organisms sieved through mesh ≥ 1 mm.

	Amp	Iso	Mys	Cum	Tan	Dec	Others	Total	Sampling	Depth	OM	Q_{50}
Ensenada de San Simón (present study)	60	9	3	4	7	12	16	111	Van Veen 0.28 m ²	Intertidal-28.2 m	0.95-36.93	0.009-1.500
Galician coasts (NW Spain)												
Ria de Foz (Junoy and Viéitez, 1988)	9	9	4	2	0	5	0	29*	0.16 m ²	Intertidal	0.08-3.11	0.06-0.31
Ria de Ares-Betanzos (Garmendia <i>et al.</i> , 1998)	73	9	7	13	2	18	1	123	Rallier du Baty Box-corer de Reineck	2.5-4.4 m	-	Gravel- Sandy mud
Ria de Arousa (López-Jamar, 1982)	7	2	0	1	1	0	0	17	Van Veen 0.25 m ²	-	4.22-14.68	0.010-0.287
Estuario de La Foz (Anadón, 1980)	5	3	1	1	0	3	0	13*	0.12 m ²	Intertidal	0.47-1.91	0.109-1.168
Estuario del Miño (Mazé <i>et al.</i> , 1993)	8	5	1	0	0	3	0	17*	Shipek 0.04 m ² (4 times)	-	0-0.624	Sand
Atlantic Iberian coasts												
Basque continental shelf (Martínez and Adarraga, 2001)	40	5	3	18	1	0	0	67	Van Veen 0.1 m ²	5-22.5 m	1.16-5.60	0.06-0.65
Hendaya beach (San Vicente and Sorbe, 2001)	19	3	12	5	0	10	0	49	Suprabenthic sled (50 x 20 cm ²)	Intertidal	-	0.195
Western Portuguese coast (Sousa Reis <i>et al.</i> , 1982)	20	8	5	5	0	6	0	44*	7-50 litres	Intertidal-30 m	-	Muddy sand -Coarse sand
Albufeira and Obidos lagoons (Rodrigues and Dauvin, 1985)	36	-	5	4	-	-	-	45	Rallier du Baty 0.5-40 m	-	-	-
Ria de Alvor (Rodrigues and Dauvin, 1987)	19	6	4	1	1	-	-	31	0.5 m ²	Intertidal-Subtidal	-	Mud-Sand
Mondego Estuary (Marques <i>et al.</i> , 1993)	18	10	1	0	0	4	0	33*	3 litres	Intertidal	-	-
Tage Estuary (Calvário, 1984)	13	11	0	0	2	2	0	28	-	Intertidal	-	-
Algarve coast (Alves <i>et al.</i> , 2003)	10	3	3	1	2	12	2	33*	0.0625 m ²	7-9 m	-	-
Punta Umbría (Rodríguez and Viéitez, 1992)	6	1	0	1	1	9	0	18*	Aprox. 20 litres	5.4-12.6 m	0.76-2.28	0.099-0.670
Cádiz Bay (Drake <i>et al.</i> , 1997)	30	22	10	2	1	21	1	87	Suprabenthic net	-	-	-

cies (Somerfield *et al.*, 2002), stabilizing the sediment and providing protection for potential preys. Many ecological studies have shown salinity to be the main factor controlling zonation in the structure of the benthic communities. However, some other authors have emphasized that this is not the main factor in brackish environments (Bazairi *et al.*, 2003). In our inlet the seagrasses were located in intertidal and/or shallow subtidal areas subject to abrupt salinity changes. The salinity or other factors related to depth are the major limiting factors for the non-euryhaline species, as suggested by Junoy (1996). Nevertheless, as in Marques and Bellan-Santini (1987), high densities of *Melita palmata* and *Microdeutopus gryllotalpa* were recorded within the *Zostera* meadows. These species can be acting here as detritus feeders (Cunha *et al.*, 1999). *M. gryllotalpa* has been recorded in other organic enriched environments (Drake *et al.*, 1997). However, *M. palmata* showed a restricted distribution in San Simón, since it has been classically cited in bottoms down to 50 m depth (Lincoln, 1979; Ruffo, 1982; Hayward and Ryland, 1990).

The highest values of diversity and number of species were found in the stable subtidal sediments situated on the mouth of the inlet, while the lowest values were found in the mouth of the rivers Oitabén-Verdugo and Alvedosa and in the proximities of the harbours (sites 12, 24 and 29). These results confirmed observations made by Conradi *et al.* (1997), who found a clear differentiation between the amphipod populations living in outer sites of a bay and those living in the inner area. In fact, these authors showed that the amphipod communities reflect the physico-chemical conditions in the area (e.g. *Melita palmata* or *Idotea baltica* showing a high tolerance to large physico-chemical fluctuations in San Simón).

Multivariate analysis showed three major crustacean assemblages in the Ensenada de San Simón. The group A assemblage, characterized by *Melita palmata*, *Microdeutopus gryllotalpa* and *Idotea baltica*, was settled in the intertidal area. Similar fauna was found in intertidal areas along European coasts, e.g. in tidal channels of the Arcachon Bay (Bachelet *et al.*, 1996), the Ria de Foz (Junoy and Viéitez, 1990) and the Mira Estuary (Marques and Bellan-Santini, 1987), and in a coastal lagoon of the NW African coast (Bazairi *et al.*, 2003). In our case, *Melita palmata* was the dominant species, as in the communities described by Bachelet *et al.* (1996) and Bazairi *et al.* (2003). Group B, characterized by *Corophium cf. runcicorne* and *Iphinoe tenella*, represented a facies of transition. Finally, on the subtidal bottoms a facies

of *Harpinia crenulata*, *H. dellavallei* and *Tanaopsis graciloides* (Group C) was found. This kind of continuous transition between assemblages is characteristic of estuaries and semi-enclosed coastal ecosystems (Bazairi *et al.*, 2003), and has been cited as evidence of the importance of quantitative studies in differentiating assemblages (García Muñoz *et al.*, 2008). Similar fauna was found in the community described by Desroy and Retière (2001) in the subtidal bottoms of the Rance Basin (western English Channel), although *Ampelisca tenuicornis* and *Microdeutopus versiculatus* showed high dominances in that estuary.

The intertidal assemblage displayed some features in common with the *Cardium edule-Scrobicularia* community described by Thorson (1957). In subtidal areas, the assemblages displayed common features with the *Abra alba* community described by Petersen (1914). Therefore, the patterns of crustacean distribution are similar to those previously reported for other benthic taxa in the same area (Cacabelos *et al.*, 2008a, b). In conclusion, the most important factor in determining distribution patterns of crustacean communities in the Ensenada de San Simón was the water depth, directly influencing the hydrodynamic conditions and sediment composition of the inlet.

ACKNOWLEDGEMENTS

We gratefully thank the team at the Adaptations of Marine Animals laboratory for their invaluable help with the sample collection, the identification of the species and the understanding of the statistical methods. This paper is a contribution to the research project PGIDT 00PXI30119 PR.

REFERENCES

- Abella, F.E., J.M. Parada and J. Mora. – 1996. Relationship between the macrobenthic community structure and the presence of mussel rafts culture in the Ria de Vigo (NW Iberian Peninsula). *Crangon*, 1: 111-118.
- Alves, F., L. Chícharo, A. Nogueira and J. Regala. – 2003. Changes in benthic community structure due to clam dredging on the Algarve coast and the importance of seasonal analysis. *J. Mar. Biol. Ass. U. K.*, 83: 719-729.
- Bachelet, G., X. de Montaudouin and J.C. Dauvin. – 1996. The quantitative distribution of subtidal macrozoobenthic assemblages in Arcachon Bay in relation to environmental factors: a multivariate analysis. *Est. Coast. Shelf Sci.*, 42(3): 371-391.
- Bazairi, H., A. Bayed, M. Glémarec and C. Hily. – 2003. Spatial organization of macrozoobenthic communities in response to environmental factors in a coastal lagoon of the NW African coast (Merja Zerga, Morocco). *Oceanol. Acta*, 26: 457-471.
- Beare, D.J. and P.G. Moore. – 1996. The distribution, growth and reproduction of *Pontocrates arenarius* and *P. altamarinus* (Crustacea: Amphipoda) at Millport, Scotland. *J. Mar. Biol. Ass. U. K.*, 76: 931-950.
- Cabioch, L. – 1968. Contribution a la connaissance des peuplements benthiques de la Manche occidentale. *Cah. Biol. Mar.*, 9: 493-720.
- Cacabelos, E., J. Moreira and J.S. Troncoso. – 2008a. Distribution of Polychaeta in soft-bottoms of a Galician Ria (NW Spain). *Sci. Mar.*, 72(4): 655-667.
- Cacabelos, E., P. Quintas and J.S. Troncoso. – 2008b. Macrobenthic molluscs in soft-bottoms of the Ensenada de San Simón (Galicia, NW Spain). *Am. Malacol. Bull.*, 25: 9-19.
- Cacabelos, E., L. Gestoso and J.S. Troncoso. – 2008c. Macrobenthic fauna in the Ensenada de San Simón (Galicia, NW Spain). *J. Mar. Biol. Ass. U. K.*, 88(2): 237-245.
- Calvário, J. – 1984. Étude préliminaire des peuplements benthiques intertidaux (substrats meubles) de l'Estuaire du Tage (Portugal) et sa cartographie. *Publicação do Museu e Laboratório Zoológico e Antropológico. Faculdade de Ciências de Lisboa*, 2: 187-207.
- Cano, J. and T. García. – 1987. Macrobentos endofaunal de la Ria de Huelva. *Cuad. Marisq.*, 11: 71-91.
- Clarke, K.R. and R.M. Warwick. – 1994. *Change in marine communities: an approach to statistical analysis and interpretation*. Natural Environmental Research Council. UK.
- Conradi, M. and P.J. López-González. – 2001. Relationships between environmental variables and the abundance of peracarid fauna in Algeciras Bay (Southern Iberian Peninsula). *Cienc. Mar.*, 27(4): 481-500.
- Conradi, M., P.J. López-González and J.C. García Gómez. – 1997. The Amphipod community as a bioindicator in Algeciras Bay (Southern Iberian Peninsula) based on a spatio-temporal distribution. *P.S.Z.N. I Mar. Ecol.*, 18(2): 97-111.
- Corbera, J. and M.J. Cardell. – 1995. Cumaceans as indicators of eutrophication on soft bottoms. *Sci. Mar.*, 59(Suppl. 1): 63-69.
- Cunha, M.R., J.C. Sorbe and M.H. Moreira. – 1999. Spatial and seasonal changes of brackish peracaridan assemblages and their relation to some environmental variables in two tidal channels of Ria de Aveiro (NW Portugal). *Mar. Ecol. Prog. Ser.*, 190: 69-87.
- Dajoz, R. – 1971. *Precis d'écologie*. Dunod. Paris.
- Dauvin, J.C. – 1988. Structure et organisation trophique du peuplement des sables grossiers à *Amphioxus lanceolatus-Venus fasciata* de la baie de Morlaix (Manche occidentale). *Cah. Biol. Mar.*, 29: 163-185.
- Desroy, N. and C. Retière. – 2001. Long-term changes in muddy fine sand community of the Rance Basin: role of recruitment. *J. Mar. Biol. Ass. U. K.*, 81: 553-564.
- Desroy, N., C. Warembourg, J.M. Dewarumez and J.C. Dauvin. – 2002. Macrobenthic resources of the shallow soft-bottom sediments in the eastern English Channel and southern North Sea. *ICES J. Mar. Sci.*, 60: 120-131.
- Drake, P., A.M. Arias and M. Conradi. – 1997. Aportación al conocimiento de la macrofauna supra y epibentónica de los caños mareales de la bahía de Cádiz (España). *Publ. Espec. Inst. Esp. Oceanogr.*, 23: 133-141.
- Duffy, J.E. and M.E. Hay. – 2000. Strong impacts of grazing amphipods on the organization of a benthic community. *Ecol. Monogr.*, 70: 237-263.
- Folk, R.L. and W.C. Ward. – 1957. Brazos river bar: a study in the significance of grain size parameters. *J. Sediment. Petrol.*, 27: 3-26.
- García Muñoz, J.E., M.E. Manjón-Cabeza and J.E. García Raso. – 2008. Decapod crustacean assemblages from littoral bottoms of the Alborán Sea (Spain, west Mediterranean Sea): spatial and temporal variability. *Sci. Mar.*, 72(3): 437-449.
- Garmendia, J.M., A. Sánchez-Mata and J. Mora. – 1998. Inventario de la macrofauna bentónica de sustratos blandos submareales de la Ria de Ares-Betanzos (NO de la Península Ibérica). *Nova Acta Científica Compostelana (Biología)*, 8: 209-231.
- Garmendia, L., M. Marquiegui, F. Aguirrezabalaga, I. Cruz and L. Cantón. – 2003. Efecto de la desaparición de los vertidos de aguas residuales urbanas sobre la comunidad reducida de *Macoma* en las islas del Estuario del Río Bidasoa (golfo de Vizcaya). *Bol. Inst. Esp. Oceanogr.*, 19(1-4): 265-281.
- Grall, J. and J. Glémarec. – 1997. Biodiversité des fonds de maërl en Bretagne: approche fonctionnelle et impacts anthropiques. *Vie Milieu Ser. C Biol.*, 47: 339-349.
- Guerra, J.M., J. Corzo, M. Vega and J.C. García-Gómez. – 2002. *Structure of the peracaridean community from an estuarine zone of southwest Spain*. XII Simposio Ibérico de Estudios de Bentos Marino. Univ. de Sevilla y Museo de Gibraltar. Gibraltar-La Línea de la Concepción.
- Hayward, P.J. and J.S. Ryland. – 1990. *The Marine Fauna of the British Isles and North-West Europe. Vol. 1: Introduction and Protozoans to Arthropods*. Clarendon Press. Oxford.
- Heck Jr., K.L., C.G. Hays and R.J. Orth. – 2003. Critical evaluation of the nursery hypothesis for seagrass meadows. *Mar. Ecol.*

- Prog. Ser.*, 253: 123-136.
- Junoy, J. – 1996. *La Ría de Foz, comunidades bentónicas*. Servicio de Publicaciones de la Diputación Provincial de Lugo, Lugo.
- Junoy, J. and J.M. Viéitez. – 1990. Macrozoobenthic community structure in Ría de Foz, Galicia, NW Spain. *Mar. Biol.*, 107: 329-339.
- Kikuchi, T. – 1987. Some aspects of the ecological niche and interspecific relationship in marine benthic communities. *Ecol. Jpn.*, 24(Special No.): 29-55.
- Lastra, M., J. Mora, A. Sánchez and J. Palacio. – 1990. Comunidades bentónicas infralitorales de la Bahía de Santander (N de España). *Cah. Biol. Mar.*, 31: 25-46.
- Lincoln, R.J. – 1979. *British Marine Amphipoda: Gammaridea*. British Museum (Natural History), London.
- López-Jamar, E. and R.M. Cal. – 1990. El sistema bentónico de la zona submareal de la Ría de Vigo. Macrofauna y microbiología del sedimento. *Bol. Inst. Esp. Oceanogr.*, 6: 49-60.
- López-Jamar, E. and J. Mejuto. – 1985. Bentos infaunal en la zona submareal de la ría de La Coruña. I. Estructura y distribución espacial de las comunidades. *Bol. Inst. Esp. Oceanogr.*, 2: 99-109.
- Lourido, A., J. Moreira and J.S. Troncoso. – 2008. Assemblages of peracarid crustaceans in subtidal sediments from the Ría de Aldán (Galicia, NW Spain). *Helgol. Mar. Res.*, 62(4): 289-301.
- Marques, J.C. and D. Bellan-Santini. – 1987. Crustacés Amphipodes des côtes du Portugal: faune de l'Estuaire du Mira (Alentejo, côte sud-ouest). *Cah. Biol. Mar.*, 28: 465-480.
- Marques, J.C., L.B. Rodrigues and A.J.A. Nogueira. – 1993. Intertidal macrobenthic communities structure in the Mondego Estuary (Western Portugal): Reference situation. *Vie Milieu Ser. C Biol.*, 43 (2/3): 177-187.
- Martínez, J. and I. Adarraga. – 2001. Distribución batimétrica de comunidades macrobentónicas de sustrato blando en la plataforma continental de Guipúzcoa (Golfo de Vizcaya). *Bol. Inst. Esp. Oceanogr.*, 17: 33-48.
- Mees, J., N. Fockedeey and O. Hamerlynck. – 1995. Comparative study of the hyperbenthos of three European estuaries. *Hydrobiologia*, 311: 153-174.
- Moreira, J., M. Domínguez and J.S. Troncoso. – 2004. Distribución vertical de la macroendofauna submareal en la Ensenada de Baiona (Galicia, N.O. España). *Nova Acta Cient. Compostelana (Biol.)*, 13: 89-102.
- Moreira, J., E. Cacabelos and J.S. Troncoso. – 2009. Diversity and spatial distribution of the gastropod fauna (Mollusca: Gastropoda) on subtidal sedimentary substrata of the Ensenada de Baiona (Galicia, NW Iberian Peninsula). *Iberus*, 27: 103-117.
- Nombela, M.A. and F. Vilas. – 1991. Datos hidrográficos en la desembocadura de los ríos Oitabén y Redondela, Ensenada de San Simón (Ría de Vigo). *Thalassas*, 9: 31-36.
- Nombela, M.A., F. Vilas and G. Evans. – 1995. Sedimentation in the mesotidal Rías Bajas of Galicia (north-western Spain): Ensenada de San Simón, Inner Ría de Vigo. *Spec. Publ. Int. Ass. Sediment.*, 24: 133-149.
- Pallas, A., B. Garcia-Calvo, A. Corgos, C. Bernardez and J. Freire. – 2006. Distribution and habitat use patterns of benthic decapod crustaceans in shallow waters: a comparative approach. *Mar. Ecol. Progr. Ser.*, 324: 173-184.
- Pérez-Arlucea, M., M. Filgueira, M. Freijido and G. Méndez. – 2000. Parámetros morfométricos e hidrológicos de las cuencas de drenaje y ríos tributarios a la Ría de Vigo. Estimación de las variaciones anuales en las cargas en suspensión y en disolución. *J. Iberian Geol.*, 26: 171-187.
- Petersen, C.G.J. – 1914. Valuation of the sea. II. The animal communities of the sea bottom and their importance for marine zoogeography. *Reports of Danish Station of Biology*, 21: 1-68.
- Pfister, C.A. – 1997. Demographic consequences of within-year variation in recruitment. *Mar. Ecol. Progr. Ser.*, 153: 229-238.
- Robertson, M.R., S.J. Hall and A. Eleftheriou. – 1989. Environmental correlates with amphipod distribution in a Scottish sea loch. *Cah. Biol. Mar.*, 30: 243-258.
- Rodrigues, A.M., and J.-C. Dauvin – 1985. Crustacés Amphipodes des sédiments meubles subtidaux des lagunes d'Albufeira et Obidos (Portugal). Pércarides (Amphipodes, Cumacés et Mysidacés) de la zone cotière de la lagune d'Obidos. *Cienc. Biol. Ecol. Syst.*, 5: 251-267.
- Rodrigues, A.M., and J.C. Dauvin. – 1987. Crustacés pércarides de la "ría de Alvor" (Côte du Sud du Portugal). *Cah. Biol. Mar.*, 28: 207-223.
- Rodríguez, C.V. and J.M. Viéitez. – 1992. Macrofauna bentónica de los primeros metros del piso infralitoral de la costa de Punta Umbria (Huelva). *Bol. Inst. Esp. Oceanogr.*, 8 (2): 327-338.
- Ruffo, S. – 1982. The Amphipoda of the Mediterranean, 1. *Memoires del' Institut Oceanographique*, 13: 1-364.
- Saiz, F., M. López-Benito and E. Anadón. – 1961. Estudio hidrográfico de la Ría de Vigo. II Parte. *Invest. Pesq.*, 18: 97-133.
- San Vicente, C. and J.-C. Sorbe. – 2001. Temporal changes in the structure of the suprabenthic community from Hendaya beach (southern Bay of Biscay): a comparison with a northwestern Mediterranean beach community. *Bol. Inst. Esp. Oceanogr.*, 17: 107-120.
- Simboura, N., A. Nicolaidou and M. Thessalou-Legaki. – 2000. Polychaete communities of Greece: an ecological overview. *Mar. Ecol.*, 21: 129-144.
- Somerfield, P.J., S. Yodnarasri and C. Aryuthaka. – 2002. Relationships between seagrass biodiversity and infaunal communities: implications for studies of biodiversity effects. *Mar. Ecol. Progr. Ser.*, 237: 97-109.
- Sousa Reis, C., V. Monteiro Marques, J. Calvário, J.C. Marques, R. Melo and R. Santos. – 1982. Contribuição para o estudo dos povoamentos bentónicos (substrato móvel) da costa ocidental portuguesa. *Oecol. Aquat.*, 6: 91-105.
- ter Braak, C.J.F. and C. Prentice. – 1988. A theory of gradient analysis. *Adv. Ecol. Res.*, 18: 271-317.
- Thorson, G. – 1957. Bottom communities (Sublittoral or Shallow Shelf). *Mem. Geol. Soc. Am.*, 67(1): 461-534.
- Troncoso, J.S. and V. Ugorri. – 1993. Datos sedimentológicos y macrofauna de los fondos infralitorales de sustrato blando de la Ría de Ares y Betanzos (Galicia, España). *Nova Acta Científica Compostelana (Biología)*, 4: 153-166.
- Upchurch, S. and E. Wenner. – 2008. Fish and decapod crustacean assemblages from the Ashepoo-Combahee-Edisto Basin, South Carolina (1993-1999). *J. Coast. Res.*, 55: 200-213.
- Vilas, F., M.A. Nombela, E. García-Gil, S. García-Gil, I. Alejo, B. Rubio and O. Pazos. – 1995. *Cartografía de sedimentos submarinos: Ría de Vigo*. Memoria del Dpto. de Recursos Naturales y Medio Ambiente (Área de Estratigrafía) de la Universidad de Vigo. Xunta de Galicia (ed.).
- Ysebaert, T. and P.M.J. Herman. – 2002. Spatial and temporal variation in benthic macrofauna and relationships with environmental variables in an estuarine, intertidal soft-sediment environment. *Mar. Ecol. Progr. Ser.*, 244: 105-124.

Scient. ed.: P. Abelló.

Received May 25, 2009. Accepted November 2, 2009.

Published online May 10, 2010.

SUPPLEMENTARY MATERIAL

The following appendices are available through the web page <http://www.icm.csic.es/scimar/supplm/sm74n3455sm.pdf>

Appendix 1. – Faunistic list of crustacean species found in the Ensenada de San Simón during the study.

Appendix 2. – Abundance of species in each sampling site expressed as ind. m⁻².

Composition and distribution of subtidal and intertidal crustacean assemblages in soft-bottoms of the Ria de Vigo (NW Spain)

EVA CACABELOS, ANTÍA LOURIDO and JESÚS S. TRONCOSO

Supplementary material

APPENDIX 1. – Faunistic list of crustacean species found in the Ensenada de San Simón during the study.

CLASS OSTRACODA

ORDER MYOCOPIDA

Myocopida sp.1

Myocopida sp.2

Myocopida sp.3

Myocopida sp.4

ORDER PODOCOPIDA

Cytheracea sp.

Family Pontocyprididae G.W. Müller, 1894

Pontocypris sp.*Propontocypris* sp.

Family Trachyleberididae Sylvester-Bradley, 1948

Carinocythereis sp.

Family Hemicytheridae Sylvester-Bradley, 1948

Aurila sp.

Family Cytheruridae G.W. Müller, 1894

Semicytherura sp.

CLASS COPEPODA

ORDER HARPACTICOIDA

Harpacticoida spp.

Family Porcellidiidae Boeck, 1865

Porcellidium sp.

ORDER POECILOSTOMATOIDA

Poecilostomatoida sp.1

Poecilostomatoida sp.2

Poecilostomatoida sp.3

CLASS MALACOSTRACA

ORDER LEPTOSTRACA

Family Nebaliidae Samouelle, 1819

Nebalia kocatasi Moreira, Koçak and Katagan, 2007*Nebalia strausi* Risso, 1826

ORDER CUMACEA

Family Bodotriidae T. Scott, 1901

Iphinoe tenella Sars, 1878

Family Leuconidae G.O. Sars, 1878

Eudorella truncatula (Bate, 1856)

Family Diastylidae Bate, 1856

Diastylis laevis Norman, 1869*Diastylis* sp.

ORDER TANAIDACEA

Family Apseudidae Leach, 1814

Apseudes latreilli (Milne-Edwards, 1828)*Apseudes talpa* (Montagu, 1808)

Family Tanaidae Dana, 1849

Zeuxo normani (Richardson, 1905)

Family Paratanaidae Lang, 1949

Heterotanais oerstedii (Krøyer, 1842)*Leptocheilia savignyi* (Krøyer, 1842)

Family Leptognathiidae Sieg, 1976

Pseudoparatanais batei (G.O. Sars, 1882)*Tanaopsis graciloides* (Liljeborg, 1864)

ORDER MYSIDACEA

Family Mysidae Dana, 1850

Praunus neglectus (G.O.Sars, 1869)*Paramysis* sp.*Erythrops* sp.

ORDER ISOPODA

Family Gnathiidae Harger, 1880

Gnathia oxyurea (Liljeborg, 1855)

Family Anthuridae Leach, 1814

Cyathura carinata (Kroyer, 1847)

Family Cirolanidae Dana, 1853

Cirolana sp.

Family Sphaeromatidae (Dahl, 1916)

Lekanesphera levii (Argano and Ponticelli, 1981)

Family Janiridae Sars, 1897

Janiropsis breviremis Sars, 1899

Family Munnidae Sars, 1899

Munna sp.

Family Arcturidae Sars, 1899

Arcturidae sp.

Arcturella sp.

Family Idoteidae Samouelle, 1819

Idotea baltica (Pallas, 1772)

ORDER AMPHIPODA

Family Lysianassidae Dana, 1849

Lepidepcreum longicorne (Bate and Westwood, 1861)*Orchomene humilis* (A.Costa, 1853)*Perrierella audouiniana* (Bate, 1857)

Family Ampeliscidae Bate, 1861

Ampelisca brevicornis (A. Costa, 1853)*Ampelisca remora* Bellan-Santini and Dauvin, 1986*Ampelisca tenuicornis* Liljeborg, 1855*Ampelisca typica* (Bate, 1856)

Family Colomastigidae Stebbing, 1899

Colomastix pusilla Grube, 1861

Family Amphilochidae Boeck, 1872

Amphilochus spencebatei (Stebbing, 1876)*Amphilochus neapolitanus* Della Valle, 1893*Gitana sarsi* Boeck, 1871

Family Leucothoidae Dana, 1852

Leucothoe incisa Robertson, 1892*Leucothoe richiardii* Lessona, 1865

Family Stenothoidae Boeck, 1871

Stenothoe monoculoides (Montagu, 1813)

Family Hyalidae Bulycheva, 1957

Hyale perieri (Lucas, 1849)

Family Gammaridae Leach, 1814

Gammaridae sp.

Echinogammarus sp.1*Echinogammarus* sp.2*Gammarus insensibilis* Stock, 1966

Family Melitidae Bousfield, 1973

Cheirocratus cf. *intermedius* Sars, 1894*Gammarella fucicola* (Leach, 1814)*Maera grossimana* (Montagu, 1808)*Maera othonis* (Milne-Edwards, 1830)*Melita palmata* (Montagu, 1804)

Family Argissidae Walker, 1904

Argissa hamatipes (Norman, 1869)

Family Oedicerotidae Liljeborg, 1865

Periocolodes longimanus (Bate and Westwood, 1868)

- Pontocrates altamarinus* (Bate and Westwood, 1862)
Westwoodilla rectirostris (Della Valle, 1893)
 Family Phoxocephalidae Sars, 1893
Harpinia antennaria Meinert, 1890
Harpinia crenulata (Boeck, 1871)
Harpinia dellavallei Chevreux, 1910
Metaphoxus simplex (Bate, 1857)
 Family Dexaminidae Leach, 1814
Atylus vedlomensis (Bate and Westwood, 1862)
 Family Aoridae Stebbing, 1899
 Aoridae spp.
Lembos sp.
Leptocheirus pilosus Zaddach, 1844
Microdeutopus anomalus (Rathke, 1843)
Microdeutopus cf. *armatus* Chevreux, 1887
Microdeutopus gryllotalpa A. Costa, 1853
Microdeutopus versiculatus (Bate, 1856)
Microdeutopus sp.
 Family Isaeidae Dana, 1853
 Isaeidae spp.
Gammaropsis maculata (Johnston, 1827)
Gammaropsis palmata (Stebbing and Robertson, 1891)
Gammaropsis sophiae (Boeck, 1861)
Megamphopus cf. *longicornis* Chevreux, 1911
Photis longicaudata (Bate and Westwood, 1862)
Photis longipes (Della Valle, 1893)
Photis sp.
 Family Corophiidae Dana, 1849
Corophium acherusicum (A. Costa, 1851)
Corophium acutum Chevreux, 1908
Corophium insidiosum Crawford, 1937
Corophium multisetosum Stock, 1952
Corophium cf. *runcicorne* Della Valle, 1893
Corophium sextonae Crawford, 1937
Corophium spp.
 Family Ischyroceridae Stebbing, 1899
Erichthonius punctatus (Bate, 1857)
 Family Caprellidae White, 1847
Caprella sp.
 Family Pariambidae Laubitz, 1993
Pariambus typicus (Kroyer, 1844)
 Family Phtisicidae Vassilenko, 1968
Phtisica marina Slabber, 1769
 ORDER DECAPODA
 Family Palaemonidae Rafinesque, 1815
Palaemon elegans Rathke, 1837
Palaemon serratus (Pennant, 1777)
 Family Alpheidae Rafinesque, 1815
Athanas nitescens (Leach, 1814)
 Family Cangronidae Haworth, 1825
Crangon crangon (Linneo, 1758)
 Family Callianassidae Dana, 1852
 Callianassidae sp.
 Family Paguridae Latreille, 1803
Anapagurus hyndmanni (Bell, 1846)
 Family Porcellanidae Haworth, 1825
Pisidia longicornis (Linneo, 1767)
 Family Majidae Samouelle, 1819
Inachus leptochirus Leach, 1817
Macropodia rostrata (Linneo, 1761)
 Family Portunidae Rafinesque, 1815
Liocarcinus arcuatus (Leach, 1814)
Carcinus maenas (Linneo, 1758)

Site	1	2	3	4	5	6	7	8	9	10	11	12	13
Myocopida sp. 1	0	0	0	0	0	0	0	0	0	0	0	0	0
Myocopida sp. 2	0	0	0	0	0	0	0	0	0	0	0	0	0
Myocopida sp. 3	0	0	0	0	0	0	0	0	0	0	0	0	0
Myocopida sp. 4	0	3.6	0	0	0	0	0	0	3.6	0	0	0	0
Cytheracea sp.	0	0	257.1	7.1	7.1	10.7	10.7	0	0	0	0	0	0
Pontocypris sp.	0	0	0	0	0	0	10.7	10.7	3.6	0	0	0	0
Propontocypris sp.	0	7.1	0	0	7.1	3.6	75.0	78.6	71.4	250.0	0	0	7.1
Cariocythereis sp.	0	0	0	0	0	0	0	3.6	0	0	0	0	0
Aurila sp.	0	0	0	0	14.3	0	0	3.6	7.1	0	3.6	0	0
Semicytherura sp.	0	0	0	0	0	0	0	0	0	0	0	0	0
Harpacticoida spp.	78.6	32.1	60.7	35.7	207.1	125.0	85.7	14.3	3.6	592.9	14.3	0	42.9
Porcellidium sp.	0	0	0	0	0	0	0	0	0	0	0	0	0
Poecilostomatoida sp.1	7.1	17.9	0	0	0	0	32.1	0	14.3	0	0	0	25.0
Poecilostomatoida sp.2	0	0	0	0	0	0	0	0	0	0	0	0	0
Poecilostomatoida sp.3	0	0	3.6	10.7	21.4	0	0	0	0	0	0	0	0
Nebalia kocatasi	0	0	0	0	0	0	7.1	0	0	0	0	0	0
Nebalia strausi	0	0	0	0	0	0	0	0	0	0	0	0	0
Iphinoe tenella	0	0	0	57.1	14.3	0	67.9	153.6	60.7	0	0	0	3.6
Eudorella truncatula	0	0	0	0	0	0	0	0	0	0	0	0	0
Diastylis laevis	0	0	0	0	0	0	0	0	0	0	0	0	0
Diastylis sp.	0	0	0	0	0	0	0	0	0	0	0	0	0
Apeudes latreilli	0	0	0	0	0	0	0	0	0	0	0	0	0
Apeudes talpa	0	0	0	0	0	0	0	0	0	0	0	0	0
Zeuxo normani	0	0	0	0	0	0	39.3	7.1	39.3	239.3	3.6	0	7.1
Heterotanaeis oerstedii	0	0	0	0	0	0	0	0	0	0	0	0	0
Leptocheilia savignyi	0	0	0	0	0	0	0	0	0	0	0	0	0
Pseudoparatanaeis batei	0	0	0	0	0	0	0	0	0	0	0	0	0
Tanaopsis graciloides	0	0	0	0	0	0	0	0	0	0	0	0	0
Praunus neglectus	0	0	0	0	0	0	7.1	0	0	0	0	0	0
Paramysis sp.	0	0	0	0	0	0	0	3.6	0	0	0	0	0
Erythrops sp.	0	0	0	0	0	0	3.6	0	0	0	0	0	0
Gnathia oxyurea	0	0	0	0	0	0	0	0	0	0	0	0	0
Cyathura carinata	0	0	7.1	10.7	46.4	0	0	0	0	0	0	0	0
Cirolana sp.	0	0	0	0	0	0	0	0	0	0	0	0	0
Lekanesphera levii	3.6	7.1	10.7	3.6	85.7	82.1	0	0	0	0	0	0	0
Janiropsis breviremis	0	0	0	0	0	0	0	0	0	0	0	0	0
Munna sp.	0	0	0	0	0	0	28.6	0	0	0	3.6	0	0
Arcturidae sp.	0	0	0	0	0	0	0	0	0	0	0	0	0
Arcturella sp.	0	0	0	0	0	0	0	0	0	0	0	0	0
Idotea baltica	64.3	575.0	189.3	10.7	7.1	3.6	0	0	0	0	0	0	0
Lepidepcreum longicorne	0	0	0	0	0	0	0	0	0	0	0	0	0
Orchomene humilis	0	0	0	0	0	0	0	0	0	0	0	0	0
Perrierella audouiniana	0	0	0	0	0	0	0	0	0	0	0	0	0
Ampelisca brevicornis	0	0	0	0	0	0	0	7.1	7.1	0	10.7	0	0
Ampelisca remora	0	0	0	0	0	0	0	0	0	0	0	0	0
Ampelisca tenuicornis	0	0	0	0	0	0	0	0	7.1	0	0	0	0
Ampelisca typica	0	0	0	0	0	0	0	0	0	0	0	0	0
Colomastix pusilla	0	0	0	0	0	0	0	0	0	0	0	0	0
Amphilocheilus spencebatei	0	0	0	0	0	0	0	0	0	0	0	0	0
Amphilocheilus neapolitanus	0	0	0	0	0	0	0	0	0	0	0	0	0
Gitana sarsi	0	0	0	0	0	0	0	0	0	0	0	0	0
Leucothoe incisa	0	0	0	0	0	0	0	0	0	0	0	0	0
Leucothoe richiardi	0	0	0	0	0	0	0	0	0	0	0	0	0
Stenothoe monoculoides	0	3.6	0	0	0	0	0	0	0	0	0	0	0
Hyale perieri	0	0	0	0	0	0	0	0	0	0	0	0	0
Gammaridae sp.	0	0	0	0	0	0	0	0	0	0	0	0	0
Echinogammarus sp. 1	0	0	0	0	0	0	0	0	0	0	0	0	3.6
Echinogammarus sp. 2	7.1	0	75.0	0	0	0	60.7	0	0	0	0	0	0
Gammarus insensibilis	0	0	0	0	17.9	0	0	0	0	0	0	0	0
Cheriacratulus cf. intermedius	0	0	0	0	0	0	0	0	0	0	0	0	0
Gammarella fucicola	0	0	0	0	0	0	0	0	0	0	0	0	0
Maera grossimana	0	0	0	0	0	0	0	0	0	0	0	0	0
Maera othonis	257.1	557.1	478.6	435.7	239.3	7.1	271.4	0	0	0	0	0	0
Melita palmata	0	0	0	0	0	0	0	0	0	0	0	0	0
Argissa hamatipes	0	0	0	0	0	0	0	0	0	0	0	0	0
Periculodes longimanus	0	0	0	0	0	0	0	0	0	0	0	0	0
Pontocrates altamarinus	0	0	0	0	0	0	0	0	0	0	0	0	0
Westwoodilla rectirostris	0	0	0	0	0	0	0	0	0	0	0	0	0
Harpinia antennaria	0	0	0	0	0	0	0	0	0	0	0	0	0
Harpinia crenulata	0	0	0	0	0	0	0	0	0	0	0	0	0
Harpinia dellavallei	0	0	0	0	0	0	0	0	0	0	0	0	0
Metaphoxus simplex	0	0	0	0	0	0	0	0	0	0	0	0	0

each sampling site expressed as ind. m⁻².

	14	15	16	17	18	19	20	21	22	23	24	25	26	27	28	29
100.0	0	28.6	178.6	10.7	17.9	0	100.0	0	60.7	0	0	214.3	278.6	0	0	
0	0	0	0	0	0	0	0	0	0	0	0	10.7	0	0	0	
0	0	0	0	0	0	0	0	0	7.1	0	0	17.9	0	0	0	
1425.0	0	32.1	2278.6	14.3	32.1	0	78.6	1950.0	1339.3	7.1	3.6	1003.6	1278.6	3.6	0	
0	28.6	0	7.1	0	0	28.6	3.6	3.6	0	3.6	0	0	0	0	0	
10.7	0	7.1	0	3.6	0	3.6	10.7	125.0	0	0	0	64.3	32.1	3.6	0	
53.6	25.0	0	3.6	3.6	7.1	196.4	25.0	10.7	3.6	7.1	32.1	0	14.3	0	0	
17.9	0	3.6	17.9	0	0	0	10.7	3.6	0	0	0	0	0	0	0	
0	0	0	17.9	3.6	0	0	0	0	0	0	0	0	0	0	0	
0	7.1	0	0	0	0	0	0	0	0	0	0	0	0	0	0	
207.1	78.6	7.1	14.3	10.7	25.0	14.3	7.1	221.4	10.7	0	103.6	46.4	42.9	117.9	0	
0	0	3.6	0	0	0	0	0	0	0	0	0	0	0	0	0	
78.6	0	10.7	0	21.4	75.0	7.1	0	28.6	3.6	0	7.1	25.0	25.0	3.6	0	
0	0	0	0	0	0	3.6	0	0	0	0	3.6	7.1	0	0	0	
0	0	0	0	0	0	0	0	0	0	0	0	0	0	0	0	
0	0	0	0	0	0	3.6	0	0	0	0	0	0	0	0	0	
0	0	0	0	0	0	0	60.7	3.6	0	0	0	7.1	10.7	0	0	
64.3	0	3.6	21.4	7.1	0	82.1	7.1	50.0	0	0	0	7.1	3.6	3.6	0	
0	0	3.6	39.3	0	0	0	7.1	50.0	32.1	0	0	17.9	85.7	0	0	
0	0	0	0	0	0	0	0	0	0	0	0	3.6	0	0	0	
0	0	0	0	0	0	0	0	0	0	0	0	3.6	0	0	0	
21.4	0	0	0	0	0	0	3.6	3.6	0	0	0	0	10.7	0	0	
14.3	0	0	0	0	0	0	0	0	0	0	0	0	0	0	0	
46.4	3.6	17.9	3.6	0	28.6	28.6	17.9	21.4	42.9	0	71.4	25.0	25.0	3.6	3.6	
0	0	0	0	0	0	0	0	0	0	0	3.6	3.6	92.9	0	0	
3.6	3.6	0	3.6	0	0	0	28.6	217.9	10.7	0	3.6	103.6	96.4	0	0	
0	0	0	0	0	0	0	0	0	0	0	0	10.7	0	0	0	
21.4	0	0	3.6	0	0	0	285.7	285.7	7.1	0	0	57.1	278.6	0	0	
0	0	0	0	0	0	3.6	0	0	0	0	0	0	0	0	0	
0	0	0	0	0	0	0	0	0	0	0	0	0	0	0	0	
0	0	0	0	0	0	0	0	0	0	0	0	0	0	0	0	
0	0	0	0	0	0	0	0	0	0	0	0	0	0	0	0	
0	0	0	0	0	0	0	0	0	0	0	0	0	0	0	0	
0	0	0	0	0	0	0	0	0	0	0	0	0	0	0	0	
0	0	0	0	0	0	0	0	0	0	0	0	0	0	0	0	
0	10.7	0	0	0	0	0	0	0	0	0	0	0	0	0	0	
0	0	0	0	0	0	0	0	0	0	0	0	3.6	0	0	0	
0	0	0	0	0	0	0	0	0	0	0	0	0	0	0	0	
0	0	7.1	0	0	3.6	0	0	0	0	0	0	0	0	0	0	
0	0	0	0	0	0	0	0	0	0	0	0	50	0	0	0	
0	7.1	0	0	0	0	0	0	0	0	0	0	0	0	0	0	
0	0	0	0	0	0	0	0	0	0	0	0	3.6	0	0	0	
0	0	0	0	0	0	0	7.1	7.1	46.4	0	0	0	7.1	0	0	
0	0	0	0	0	0	0	0	0	0	0	0	3.6	0	0	0	
17.9	0	14.3	0	0	7.1	0	0	0	0	0	0	0	0	0	0	
0	0	0	0	0	0	0	0	0	0	0	0	50.0	0	0	0	
203.6	0	42.9	46.4	14.3	25.0	0	100.0	160.7	92.9	0	0	50.0	164.3	3.6	0	
0	0	0	0	0	0	0	3.6	89.3	0	0	0	35.7	42.9	0	0	
0	0	42.9	0	0	0	0	0	0	7.1	0	0	0	0	3.6	0	
0	0	0	0	0	0	0	0	10.7	0	0	0	14.3	10.7	0	0	
0	0	0	0	0	0	0	0	0	3.6	0	0	0	0	0	0	
0	0	0	0	0	0	0	0	0	0	0	0	0	3.6	0	0	
50.0	0	82.1	78.6	0	17.9	0	3.6	78.6	67.9	0	0	21.4	39.3	0	0	
0	0	7.1	0	0	3.6	0	3.6	0	39.3	0	0	0	0	0	0	
0	0	0	0	0	7.1	0	0	0	0	0	0	7.1	3.6	0	0	
0	0	0	3.6	0	0	0	0	0	0	0	0	0	0	0	0	
3.6	0	0	0	0	0	0	0	0	0	0	0	0	0	0	0	
0	0	0	0	0	0	3.6	0	0	0	0	0	0	0	0	0	
0	10.7	0	0	0	0	121.4	0	0	0	0	3.6	0	0	0	0	
0	7.1	0	0	0	0	0	0	0	0	0	0	0	0	0	0	
0	0	0	0	0	0	0	7.1	0	0	0	0	0	0	0	0	
7.1	0	0	0	0	0	0	0	0	0	0	0	385.7	3.6	0	0	
0	0	0	0	0	21.4	0	3.6	67.9	3.6	0	0	0	14.3	0	0	
14.3	139.3	0	3.6	0	0	407.1	28.6	3.6	0	0	0	0	3.6	0	0	
0	0	0	0	0	0	0	0	0	0	0	0	3.6	0	0	0	
0	0	0	0	0	0	0	0	7.1	0	0	0	0	0	0	0	
0	0	0	0	0	0	0	0	0	0	0	0	3.6	0	0	0	
0	0	0	0	0	0	0	0	0	0	0	0	14.3	0	0	0	
0	0	0	0	0	0	0	7.1	92.9	485.7	3.6	3.6	14.3	332.1	0	0	
139.3	0	0	82.1	0	0	0	67.9	360.7	71.4	0	0	92.9	271.4	0	0	
0	0	10.7	507.1	0	3.6	0	82.1	64.3	250.0	3.6	0	0	171.4	0	0	
0	0	0	0	0	0	0	17.9	392.9	14.3	0	0	346.4	364.3	0	0	
0	0	0	0	0	0	0	0	0	0	0	0	89.3	0	0	0	

Site	1	2	3	4	5	6	7	8	9	10	11	12	13
<i>Atylus vedlomensis</i>	0	0	0	0	0	0	3.6	0	0	0	0	0	0
Aoridae spp.	0	0	0	0	0	0	0	0	0	0	0	0	0
<i>Lembos</i> sp.	0	0	0	0	0	0	0	0	0	14.3	14.3	0	0
<i>Leptocheirus pilosus</i>	0	0	0	0	0	0	53.6	7.1	7.1	0	7.1	0	0
<i>Microdeutopus anomalus</i>	21.4	3.6	3.6	14.3	0	0	435.7	0	0	32.1	25.0	0	0
<i>Microdeutopus cf. armatus</i>	0	0	0	0	0	0	0	0	0	0	0	0	0
<i>Microdeutopus gryllotalpa</i>	0	0	0	0	0	0	0	0	7.1	0	0	0	0
<i>Microdeutopus versiculatus</i>	3.6	0	0	7.1	0	0	32.1	0	3.6	3.6	7.1	0	0
<i>Microdeutopus</i> sp.	0	0	0	0	0	0	0	0	0	0	0	0	0
Isaeidae spp.	0	3.6	0	0	0	0	42.9	0	0	0	0	0	0
<i>Gammaropsis maculata</i>	0	0	0	0	0	0	0	0	0	0	0	0	0
<i>Gammaropsis palmata</i>	0	0	0	0	0	0	0	0	0	0	0	0	0
<i>Gammaropsis sophiae</i>	0	0	0	0	0	0	0	0	0	0	0	0	0
<i>Megamphopus cf. longicornis</i>	0	0	0	0	0	0	0	0	0	0	0	0	0
<i>Photis longicaudata</i>	0	0	0	0	0	0	0	0	0	0	0	0	0
<i>Photis longipes</i>	3.6	46.4	0	46.4	42.9	0	60.7	0	0	0	0	0	0
<i>Photis</i> sp.	0	0	0	0	0	0	42.9	3.6	0	17.9	0	0	0
<i>Corophium acherusicum</i>	0	0	25.0	0	0	0	0	0	0	0	0	0	0
<i>Corophium acutum</i>	0	0	0	0	0	0	3.6	3.6	0	0	0	0	0
<i>Corophium insidiosum</i>	3.6	3.6	3.6	0	0	0	0	0	17.9	3.6	0	0	0
<i>Corophium multisetosum</i>	0	17.9	7.1	7.1	7.1	0	46.4	46.4	25.0	3.6	7.1	0	10.7
<i>Corophium cf. runcicorne</i>	21.4	14.3	0	75.0	0	0	21.4	0	0	10.7	3.6	0	0
<i>Corophium sextonae</i>	0	0	0	0	0	0	0	0	3.6	0	0	0	0
<i>Corophium</i> spp.	0	0	0	0	0	0	0	0	17.9	0	0	0	0
<i>Erichthonius punctatus</i>	0	0	0	0	0	0	0	0	0	0	0	0	0
<i>Caprella</i> sp.	0	0	0	0	0	0	0	0	3.6	0	0	0	0
<i>Pariambus typicus</i>	0	0	0	0	0	0	0	0	17.9	0	0	0	0
<i>Phtisica marina</i>	0	0	0	0	0	0	0	0	0	0	0	0	0
<i>Palaemon elegans</i>	0	0	0	0	0	0	0	0	0	0	0	0	0
<i>Palaemon serratus</i>	0	0	0	0	0	0	3.6	0	0	0	0	0	0
<i>Athanas nitescens</i>	0	0	0	0	0	0	0	0	0	0	0	0	0
<i>Crangon crangon</i>	0	0	3.6	0	0	0	0	0	0	0	0	0	0
Callianassidae sp.	0	0	0	0	0	0	0	0	0	0	0	0	0
<i>Anapagurus hyndmanni</i>	0	0	0	0	0	0	0	0	0	0	0	0	0
<i>Pisidia longicornis</i>	0	0	0	0	0	0	0	0	3.6	0	0	0	0
<i>Inachus leptochus</i>	0	0	0	0	0	0	0	0	0	0	0	0	0
<i>Macropodia rostrata</i>	0	0	0	0	0	0	0	0	0	0	0	0	0
<i>Liocarcinus arcuatus</i>	0	0	0	0	0	0	0	0	0	0	0	0	0
<i>Carcinus maenas</i>	7.1	42.9	10.7	17.9	14.3	0	0	0	0	0	0	0	0

each sampling site expressed as ind. / m².

14	15	16	17	18	19	20	21	22	23	24	25	26	27	28	29
142.9	0	85.7	103.6	14.3	39.3	0	3.6	0	17.9	0	3.6	3.6	0	10.7	0
0	0	0	0	0	7.1	0	0	7.1	0	0	0	3.6	28.6	0	0
0	0	0	0	0	0	7.1	0	0	0	0	3.6	0	0	0	0
692.9	0	21.4	3.6	0	21.4	10.7	64.3	950	42.9	0	42.9	575.0	1953.6	3.6	0
0	10.7	0	0	0	0	132.1	0	0	0	0	0	0	0	0	0
153.6	0	0	17.9	0	0	0	42.9	64.3	85.7	0	3.6	42.9	50.0	0	0
0	0	0	0	0	0	0	0	0	0	0	0	0	0	0	0
7.1	0	10.7	3.6	0	0	0	0	0	3.6	0	3.6	0	7.1	3.6	0
25.0	0	0	3.6	0	10.7	0	28.6	57.1	0	0	0	157.1	110.7	0	0
0	0	0	0	0	0	25.0	0	0	0	0	0	0	0	0	0
0	0	0	0	0	0	0	0	0	0	0	0	75.0	17.9	0	0
39.3	0	14.3	39.3	0	17.9	0	0	0	7.1	3.6	0	21.4	28.6	17.9	0
0	0	0	0	0	0	0	0	0	0	0	0	3.6	0	0	0
0	0	3.6	0	0	0	0	0	0	10.7	0	0	0	0	0	0
0	0	0	0	0	0	7.1	3.6	0	0	0	3.6	17.9	0	0	0
0	0	0	0	0	0	10.7	0	0	0	0	0	0	0	0	0
0	0	0	0	0	0	10.7	3.6	0	0	0	3.6	0	0	0	0
0	0	0	0	0	0	0	0	0	0	0	0	0	0	0	0
64.3	0	396.4	42.9	10.7	14.3	0	7.1	17.9	7.1	0	0	21.4	3.6	10.7	0
0	0	0	0	0	0	0	0	0	3.6	0	0	0	3.6	0	0
7.1	3.6	3.6	46.4	7.1	10.7	3.6	10.7	17.9	14.3	0	0	32.1	0	14.3	0
0	0	0	0	0	0	0	7.1	3.6	0	0	0	303.6	0	0	0
0	0	0	0	0	0	0	0	96.4	0	0	0	0	0	0	0
110.7	0	0	128.6	28.6	7.1	0	0	39.3	7.1	7.1	0	0	7.1	0	0
0	0	0	0	3.6	3.6	0	7.1	3.6	7.1	0	0	39.3	17.9	0	0
0	0	0	0	0	0	0	0	96.4	0	0	0	0	0	0	0
110.7	0	0	128.6	28.6	7.1	0	0	39.3	7.1	7.1	0	0	7.1	0	0
0	0	0	0	3.6	3.6	0	7.1	3.6	7.1	0	0	39.3	17.9	0	0
0	0	0	0	0	0	3.6	0	0	0	0	0	0	0	0	0
0	0	0	0	0	0	3.6	0	0	0	0	0	0	0	0	0
0	0	0	0	0	0	3.6	0	0	0	0	0	0	0	0	0
0	0	0	3.6	0	0	0	0	0	0	0	0	0	7.1	0	0
0	0	3.6	0	0	0	0	0	0	0	0	0	0	0	0	0
0	0	0	0	0	0	0	0	0	0	0	0	78.6	3.6	0	0
0	0	0	3.6	0	0	0	0	28.6	7.1	0	0	0	0	0	0
0	0	0	0	7.1	0	0	0	3.6	0	0	0	3.6	0	0	0
0	0	0	0	0	0	0	0	3.6	0	0	0	0	0	0	0
0	0	0	0	0	0	0	0	0	0	0	0	0	7.1	0	0
0	14.3	0	0	0	0	10.7	0	0	0	0	0	0	0	0	0